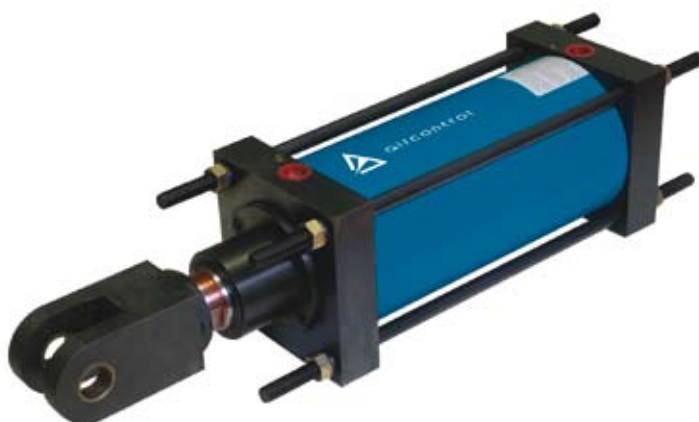


# Serie 30 y 35 / 30 and 35 Series

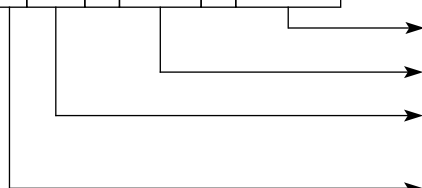
## Cilindros Extra Fuertes / Heavy Duty cylinders

Los cilindros neumáticos de las series 30 y 35 están diseñados para trabajar en condiciones extremas y ambientes hostiles durante mucho tiempo. Están disponibles con o sin tirantes de montaje y en diámetros desde 50 hasta 300 mm. Todos los cilindros son adecuados para instalaciones que requieran un elevado número de ciclos. Su principal campo de aplicación se sitúa en los sectores siderúrgico, laminación, cementos, aluminio, vidrio, papel, minería, maquinaria para obras públicas, automoción, etc.

The pneumatic cylinders of the 30 and 35 series are designed to work in extreme conditions and hostile environments for a long time. They are available with or without tie rods and in bores from 50 to 300 mm. All these cylinders are suitable for installations that need a high number of cycles. Their main application areas can be found in the iron and steel industry, glass industry, paper industry, mining, machinery for public works and automotive industry.



A \* \* \* A \* \* \* \* A \* \* \* \* \*



### Codificación / Codification

Carrera (mm) / Stroke (mm)	
Diámetro interno (mm) / Internal bore (mm)	
30	Con tirantes / With tie rods
35	Sin tirantes / Without tie rods
0	Cilindro estándar / Standard cylinder
A	Alta temperatura (AT) / High temperature (HT)
F	Fuelle / Bellows
K	Vástago inoxidable / Stainless steel piston rod
L	Vástago inoxidable + Juntas AT / Stainless steel piston rod + HT seals

### Carreras / Strokes

Todas carreras disponibles según las necesidades del cliente.

All strokes available according to the customer's needs.

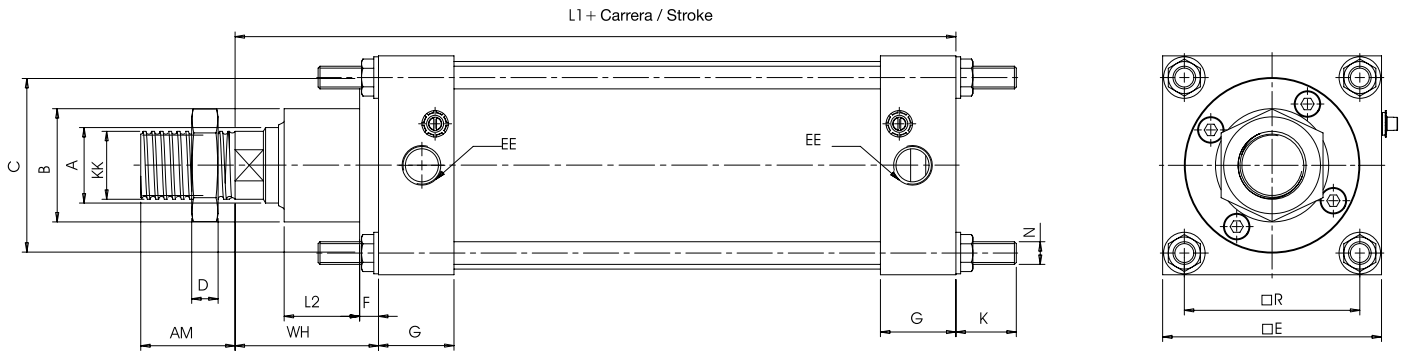
### Características técnicas / Technical specifications

Tapas Cylinder heads	Acero laminado Rolled steel
Vástago Piston rod	Acero laminado cromado y rectificado (acero inoxidable bajo petición) Chrome-plated and rolled ground steel (stainless steel on request)
Pistón Piston	Acero laminado Rolled steel
Tirantes Tie rods	Acero laminado Rolled steel
Camisa Liner	Acero laminado ST-52 cromado y rectificado internamente Chrome-plated and honed ST-52 rolled steel
Juntas Seals	NBR (Vitón bajo petición) NBR (Viton on request)
Amortiguación Cushioning	Regulable en ambos sentidos Adjustable at both ends
Rango temperatura ambiente Environmental temperature range	-30°C → +80°C
Rango temperatura fluido Fluid temperature range	0°C → +40°C (-30°C → +200°C con juntas Vitón / with Viton seals)
Lubricación Lubrication	No necesaria Not required
Fluido Fluid	Aire filtrado Filtered air
Máxima presión operativa Maximum operating pressure	10 bar
Fuerzas Forces	Página datos técnicos Technical information page
Consumo de aire Air consumption	Página datos técnicos Technical information page

## Serie 30 y 35 / 30 and 35 Series

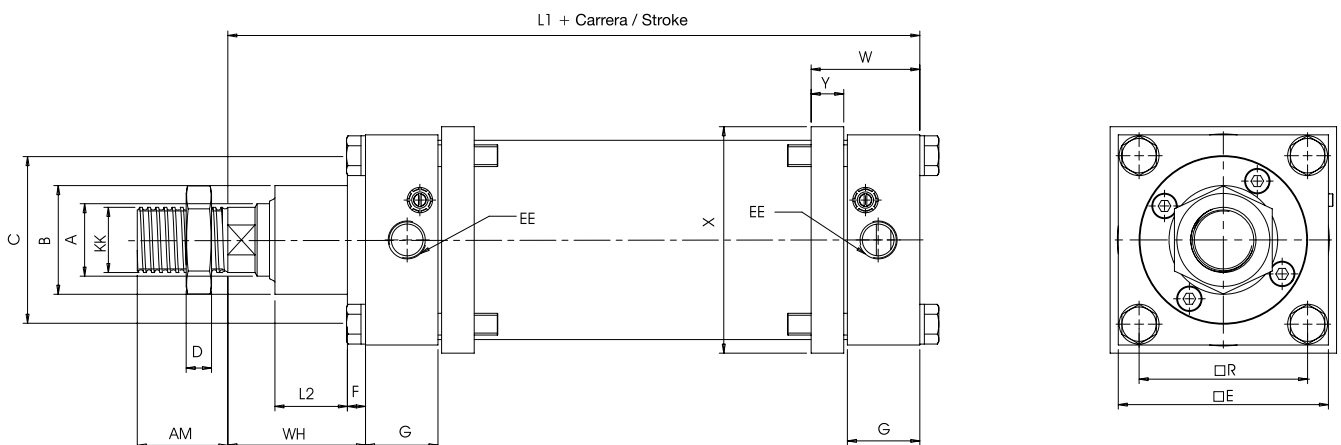
### Cilindros Extra Fuertes / Heavy Duty cylinders

#### Serie 30 30 Series



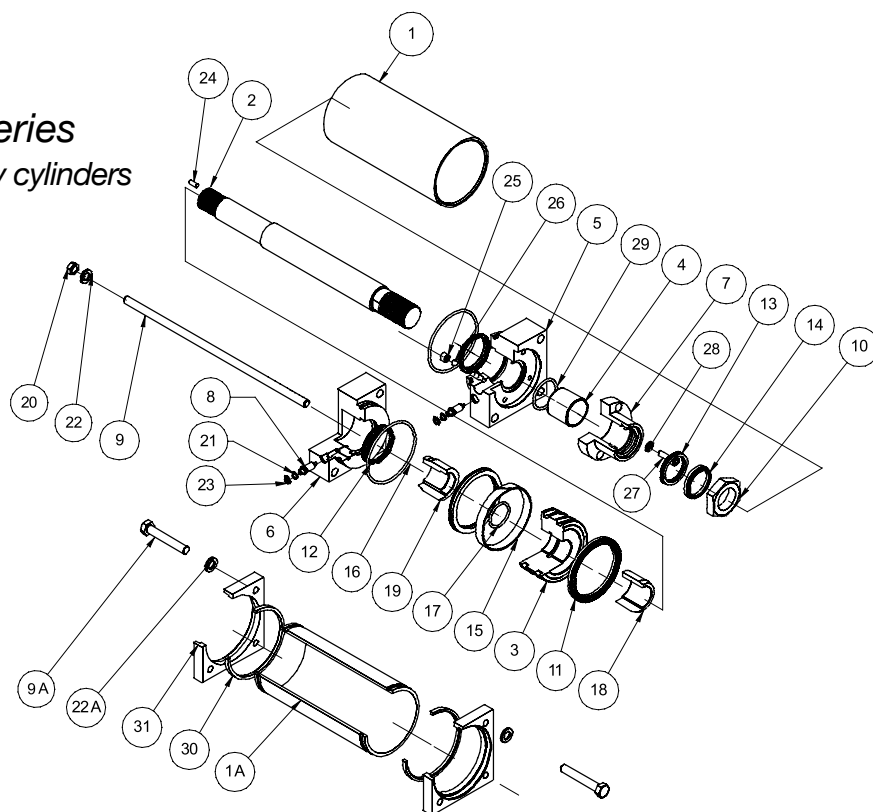
Ø	A	B	C	D	E	EE	F	G	K	L1	L2	N	R	W	WH	X	Y	AM	KK
50	22	45	0	9	70	1/4"	0	33	23	179 <sup>±1</sup>	35	M.8	53	46,5	55	70	12	35	M.20X2,5
63	28	52	0	10	80	3/8"	0	33	23	187 <sup>±1,2</sup>	41	M.10	62	46,5	63	80	12	45	M.24X3
80	32	52	0	12	95	3/8"	0	33	24	199 <sup>±1,2</sup>	45	M.10	76	49	67	102	15	45	M.27X3
100	40	60	92	14	116	1/2"	10	40	32	232 <sup>±1,2</sup>	40	M.12	93	60	76	125	18	50	M.36X4
125	50	75	110	16	145	1/2"	8	45	35	243 <sup>±1,2</sup>	42	M.14	115	67	75	155	20	55	M.42X4,5
160	60	85	125	20	182	3/4"	8	45	37	264 <sup>±1,7</sup>	60	M.16	145	72	93	198	25	75	M.52X3
200	60	85	125	20	225	3/4"	10	56	46	320 <sup>±1,7</sup>	60	M.20	180	88	114	245	30	75	M.52X3
250	75	105	150	28	275	1"	10	60	48	359 <sup>±2</sup>	63	M.24	220	97	125	300	35	100	M.68X4
300	75	105	150	28	325	1"	10	60	48	359 <sup>±2</sup>	63	M.27	260	97	125	355	35	100	M.68X4

#### Serie 35 35 Series



## Serie 30 y 35 / 30 and 35 Series

### Cilindros Extra Fuertes / Heavy Duty cylinders



Pos. Num.	Denominación Description	Cant. Units	Diámetro / Bore									
			50	63	80	100	125	160	200	250	300	
1	Camisa / Liner	1	30BA05AXXXX	30BA06AXXXX	30BA08AXXXX	30BA10AXXXX	30BA12AXXXX	30BA16AXXXX	30BA20AXXXX	30BA25AXXXX	30BA30AXXXX	
2	Vástago / Piston rod	1	30CA05AXXXX	30CA06AXXXX	30CA08AXXXX	30CA10AXXXX	30CA12AXXXX	30CA16AXXXX	30CA20AXXXX	30CA25AXXXX	30CA25AXXXX	
3	Cabeza pistón / Piston	1	30 FE 05 A	30 FE 06 A	30 FE 08 A	30 FE 10 A	30 FE 12 A	30 FE 16 A	30 FE 20 A	30 FE 25 A	30 FE 30 A	
4	Casquillo guía / Guide bush	1	30 05 04	30 06 04	30 08 04	70 16 04	30 12 04	30 16 04	30 16 04	30 25 04	30 25 04	
5	Tapa delantera / Front cylinder head	1	30 FA 05 A	30 FA 06 A	30 FA 08 A	30 FA 10 A	30 FA 12 A	30 FA 16 A	30 FA 20 A	30 FA 25 A	30 FA 30 A	
6	Tapa trasera / Rear cylinder head	1	30 FB 05 A	30 FB 06 A	30 FB 08 A	30 FB 10 A	30 FB 12 A	30 FB 16 A	30 FB 20 A	30 FB 25 A	30 FB 30 A	
7	SopORTE guía / Guide bracket	1				30 FH 10 A	30 FH 12 A	30 FH 16 A	30 FH 20 A	30 FH 25 A	30 FH 30 A	
8	Regulador / Regulator	2	30 FL 05 A	30 FL 06 A	30 FL 06 A	30 FL 10 A	30 FL 10 A	30 FL 10 A	30 FL 20 A	30 FL 20 A	30 FL 20 A	
9	Tirante / Tie rod	4	30DA05AXXXX	30DA06AXXXX	30DA08AXXXX	30DA10AXXXX	30DA12AXXXX	30DA16AXXXX	30DA20AXXXX	30DA25AXXXX	30DA30AXXXX	
10	Contratuercas / Locknut	1	30 05 10	30 06 10	30 08 10	30 10 10	30 12 10	30 16 10	30 16 10	30 25 10	30 25 10	
*11	Collarín / Collar	2	-	-	-	-	-	-	-	-	-	
*12	Collarín de amortiguación / Cushioning seal	2	-	-	-	-	-	-	-	-	-	
*13	Collarín / Collar	1	-	-	-	-	-	-	-	-	-	
*14	Rascador del vástago / Piston rod scraper	1	-	-	-	-	-	-	-	-	-	
*15	Segmento deslizamiento / Slipping segment	1	-	-	-	-	-	-	-	-	-	
*16	Junta tórica / O-Ring	2	-	-	-	-	-	-	-	-	-	
*17	Junta tórica / O-Ring	1	-	-	-	-	-	-	-	-	-	
18	Casquillo amortiguación delantera / Front cushioning bush	1	30 FJ 05 A	30 FJ 06 A	30 FJ 08 A	30 FJ 10 A	30 FJ 12 A	30 FJ 16 A	30 FJ 20 A	30 FJ 25 A	30 FJ 25 A	
19	Casquillo amortiguación trasera / Rear cushioning bush	1	30 FK 05 A	30 FK 06 A	30 FK 08 A	30 FK 10 A	30 FK 12 A	30 FK 16 A	30 FK 20 A	30 FK 25 A	30 FK 25 A	
20	Tuerca bicromatada / Bichromated nut	8	26 05 20	26 08 20	26 08 20	26 12 20	30 12 20	26 16 20	26 25 20	26 30 20	30 30 20	
*21	Junta tórica / O-Ring	2	-	-	-	-	-	-	-	-	-	
22	Arandela / Washer	8		26 08 22	26 08 22	26 12 22	30 12 22	26 16 22	26 25 22	30 25 22	30 30 22	
23	Arandela seguridad retención / Lock washer	2	70 08 23	70 08 23	70 06 23	70 06 23	70 06 23	70 06 23	70 10 19	70 10 19	70 10 19	
24	Prisionero / Setscrew	1	30 05 24	30 05 24	30 05 24	30 10 24	30 10 24	30 10 24	30 10 24	30 10 24	30 10 24	
25	Tuerca de retención / Locknut	2	-	30 06 25	30 FM 08 A	30 FM 10 A	30 FM 10 A	30 FM 16 A	30 FM 16 A	30 FM 25 A	30 FM 25 A	
26	Bola de retención / Latch ball	2	-	30 06 26	30 08 26	30 10 26	30 10 26	30 16 26	30 16 26	30 25 26	30 25 26	
27	Tornillo Allen / Allen screw	4	-	-	-	30 10 27	30 10 27	30 16 27	30 16 27	30 25 27	30 25 27	
28	Arandela / Washer	4	-	-	-	26 05 22	26 05 22	AR160D010D	AR160D010D	AR160D012D	AR160D012D	
*29	Junta tórica / O-Ring	1	-	-	-	-	-	-	-	-	-	
<b>Series 35 / 35 Series</b>												
1A	Camisa / Liner	1	35BA05AXXXX	35BA06AXXXX	35BA08AXXXX	35BA10AXXXX	35BA12AXXXX	35BA16AXXXX	35BA20AXXXX	35BA25AXXXX	35BA30AXXXX	
9A	Tornillo / Screw	8	TR103D08D55	TR103D10D60	TR103D10D60	TR103D12D75	TR103D14D90	TR103D16D90	TR103D20D120	TR103D24D120	TR103D24D120	
22A	Arandela / Washer	8	AR160D008F	26 08 22	26 08 22	26 12 22	30 12 22	26 16 22	26 25 22	30 25 22	30 30 22	
30	Anillo de retención / Locking ring	2	35 FT 05 A	35 FT 06 A	35 FT 08 A	35 FT 10 A	35 FT 12 A	35 FT 16 A	35 FT 20 A	35 FT 25 A	35 FT 30 A	
31	SopORTE de apriete / Clamping bracket	2	35 FU 05 A	35 FU 06 A	35 FU 08 A	35 FU 10 A	35 FU 12 A	35 FU 16 A	35 FU 20 A	35 FU 25 A	35 FU 30 A	
<b>Kit de repuestos / Spare kit</b>			<b>50</b>	<b>63</b>	<b>80</b>	<b>100</b>	<b>125</b>	<b>160</b>	<b>200</b>	<b>250</b>	<b>300</b>	
Estándar / Standard			30KR05	30KR06	30KR08	30KR10	30KR12	30KR16	30KR20	30KR25	30KR30	
Alta temperatura (AT) / High temperature (HT)			A 30KR05	A 30KR06	A 30KR08	A 30KR10	A 30KR12	A 30KR16	A 30KR20	A 30KR25	A 30KR30	

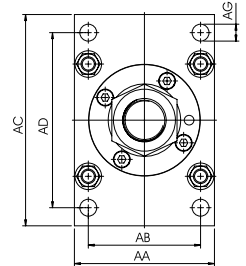
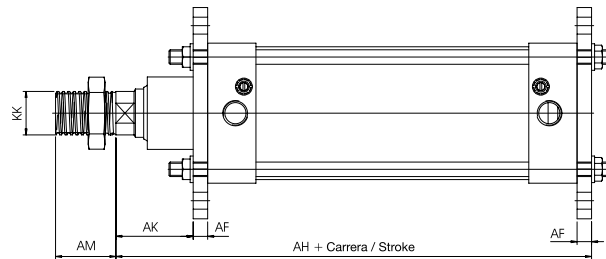
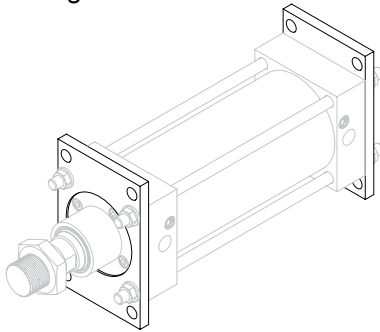
\* Componentes del kit de repuestos / Spare kit components

## Serie 30 y 35 / 30 and 35 Series

### Cilindros Extra Fuertes / Heavy Duty cylinders

#### Accesorios de fijación / Fixing elements

### Brida Flange



### Brida delantera Front flange

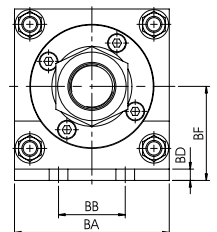
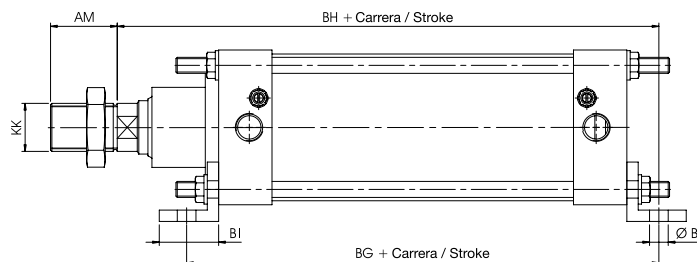
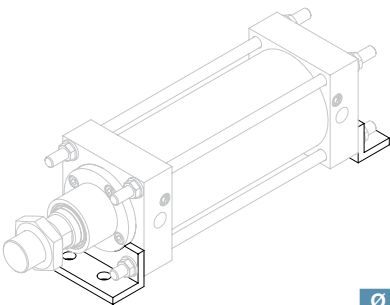
### Brida trasera Rear flange

Ø	AA	AB	AC	AD	AF	AG	AH	AK	AM	KK
50	70	53 ±0,3	105	85 ±0,3	8	10	187 ±1,3	47 ±1,8	35	M.20X2,5
63	80	56 ±0,3	115	95 ±0,3	10	10	197 ±1,5	53 ±1,8	45	M.24X3
80	95	68 ±0,3	135	112 ±0,3	10	12	209 ±1,5	57 ±1,8	45	M.27X3
100	116	93 ±0,3	175	145 ±0,3	12	14	244 ±1,5	64 ±1,8	50	M.36X4
125	145	115 ±0,4	205	170 ±0,4	15	16	256 ±1,5	60 ±1,8	55	M.42X4,5
160	182	130 ±0,4	240	205 ±0,4	18	18	280 ±1,8	75 ±2,2	75	M.52X3
200	225	170 ±0,5	310	265 ±0,5	22	22	338 ±1,8	92 ±2,2	75	M.52X3
250	275	210 ±1	390	330 ±1	28	26	385 ±2	97 ±2,5	100	M.68X4
300	325	245 ±1	440	385 ±1	33	28	390 ±2	92 ±2,5	100	M.68X4

COD.	Ø
B30.AAD.05	50
B30.AAD.06	63
B30.AAD.08	80
B30.AAD.10	100
B30.AAD.12	125
B30.AAD.16	160
B30.AAD.20	200
B30.AAD.25	250
B30.AAD.30	300

COD.	Ø
B30.AB.05	50
B30.AB.06	63
B30.AB.08	80
B30.AB.10	100
B30.AB.12	125
B30.AB.16	160
B30.AB.20	200
B30.AB.25	250
B30.AB.30	300

### Escuadra Bracket



Ø	BA	BB	BD	BE	BF	BG	BH	BI	AM	KK
50	70	30 ±0,3	5,5	9	42,5 ±0,5	160 ±1	197 ±1	34,5	35	M.20X2,5
63	80	30 ±0,3	5,5	11	50 ±0,5	166 ±1	208 ±1	34,5	45	M.24X3
80	95	30 ±0,3	5,5	11	54,5 ±0,6	166 ±2	216 ±2	34,5	45	M.27X3
100	116	50 ±0,3	8,5	14	70,5 ±0,6	204 ±2	256 ±2	44,5	50	M.36X4
125	145	57 ±0,4	8,5	17	85,5 ±0,6	226 ±2	270 ±2	49,5	55	M.42X4,5
160	182	70 ±0,4	10,5	17	102,5 ±0,6	235 ±2	294 ±2	64	75	M.52X3
200	225	80 ±0,5	10,5	22	125 ±0,6	286 ±2	356 ±2	64	75	M.52X3
250	275	115 ±1	14,5	26	160 ±1	394 ±2	437 ±2	119,5	100	M.68X4
300	325	140 ±1	14,5	28	185 ±1	394 ±2,5	437 ±2,5	119,5	100	M.68X4

COD.	Ø
B30.AB.05	50
B30.AB.06	63
B30.AB.08	80
B30.AB.10	100
B30.AB.12	125
B30.AB.16	160
B30.AB.20	200
B30.AB.25	250
B30.AB.30	300

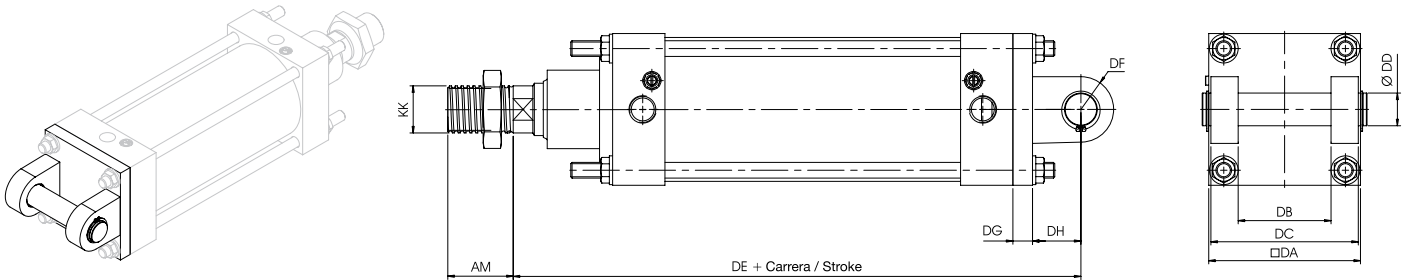
## Serie 30 y 35 / 30 and 35 Series

### Cilindros Extra Fuertes / Heavy Duty cylinders

### Accesorios de fijación / Fixing elements

#### Articulación Hembra

Female Hinge

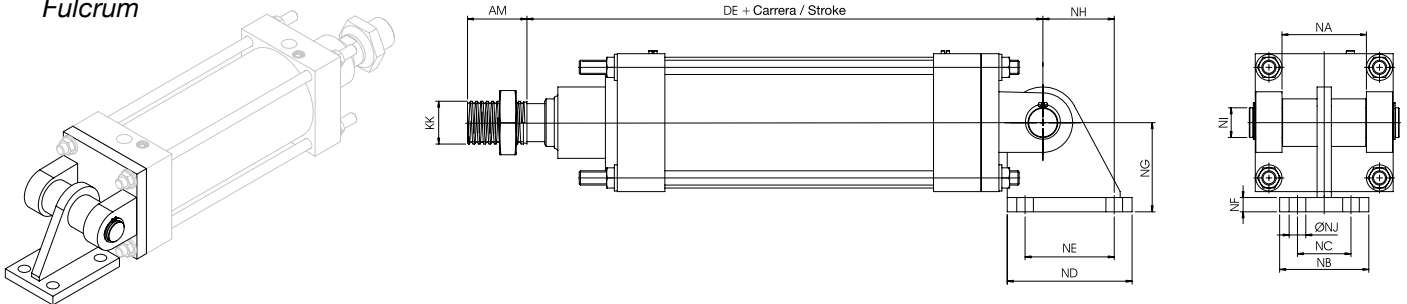


Ø	DA	DB	DC	DD H9	DE	DF	DG	DH	AM	KK
50	70	35 <sup>+0,6</sup> <sub>-0</sub>	65 <sup>+0,6</sup> <sub>-0</sub>	15	212 ±1,3	15	8	25	35	M.20X2,5
63	80	45 <sup>+0,6</sup> <sub>-0</sub>	75 <sup>+0,6</sup> <sub>-0</sub>	16	220 ±1,5	18	8	25	45	M.24X3
80	95	45 <sup>+0,6</sup> <sub>-0</sub>	85 <sup>+0,6</sup> <sub>-0</sub>	20	237 ±1,5	22	10	28	45	M.27X3
100	116	71 <sup>+0,7</sup> <sub>-0</sub>	115 <sup>+0,7</sup> <sub>-0</sub>	25	284 ±1,5	25	15	37	50	M.36X4
125	145	90 <sup>+0,7</sup> <sub>-0</sub>	140 <sup>+0,7</sup> <sub>-0</sub>	25	306 ±1,5	25	15	50	55	M.42X4,5
160	182	100 <sup>+0,8</sup> <sub>-0</sub>	160 <sup>+0,8</sup> <sub>-0</sub>	30	334 ±1,8	35	18	54	75	M.52X3
200	225	110 <sup>+0,8</sup> <sub>-0</sub>	180 <sup>+0,8</sup> <sub>-0</sub>	35	401 ±1,8	42	22	63	75	M.52X3
250	275	110 <sup>+1,2</sup> <sub>-0</sub>	190 <sup>+1,2</sup> <sub>-0</sub>	40	457 ±2,5	48	28	72	100	M.68X4
300	325	120 <sup>+1,2</sup> <sub>-0</sub>	210 <sup>+1,2</sup> <sub>-0</sub>	50	467 ±2,5	56	28	82	100	M.68X4

COD.	Ø
G30.AD.05	50
G30.AD.06	63
G30.AD.08	80
G30.AD.10	100
G30.AD.12	125
G30.AD.16	160
G30.AD.20	200
G30.AD.25	250
G30.AD.30	300

#### Sorporte Articulación

Fulcrum



Ø	DE	NA	NB	NC	ND	NE	NF	NG	NH	NI	NJ	AM	KK
50	212 ±1,3	34	46	32	60	40	8	40	30	15	9	35	M.20X2,5
63	220 ±1,5	43	55	37	70	50	8	50	40	17	11	45	M.24X3
80	237 ±1,5	43	55	37	75	55	10	60	43	20	11	45	M.27X3
100	284 ±1,5	70	75	45	105	75	12	75	60	25	14	50	M.36X4
125	306 ±1,5	70	75	45	105	75	12	75	60	25	14	55	M.42X4,5
160	334 ±1,8	98	95	65	115	85	14	100	65	30	17	75	M.52X3
200	401 ±1,8	108	110	70	130	90	20	125	68	35	22	75	M.52X3
250	457 ±2,5	108	120	76	140	90	20	150	65	40	25	100	M.68X4
300	467 ±2,5	118	140	90	160	100	25	180	70	50	28	100	M.68X4

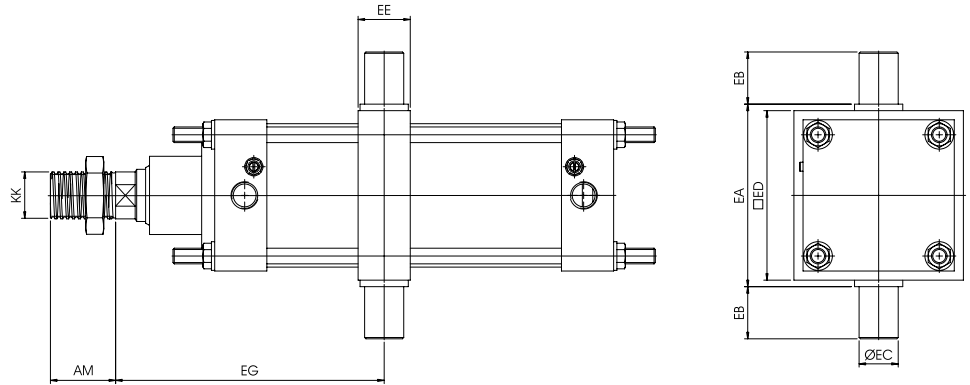
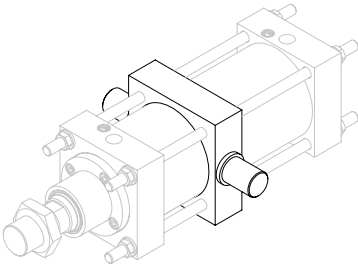
COD.	Ø
B30.AN.05	50
B30.AN.06	63
B30.AN.08	80
B30.AN.10	100
B30.AN.10	125
B30.AN.16	160
B30.AN.20	200
B30.AN.25	250
B30.AN.30	300

## Serie 30 y 35 / 30 and 35 Series

### Cilindros Extra Fuertes / Heavy Duty cylinders

#### Accesorios de fijación / Fixing elements

### Zuncho Intermediate Hinge

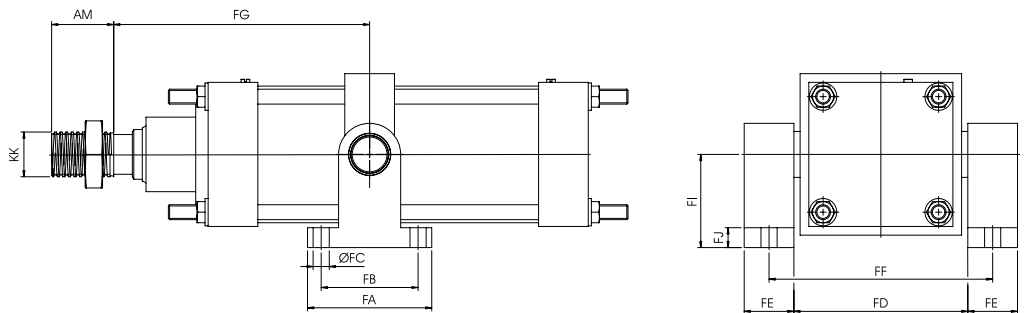
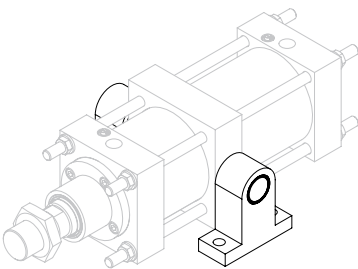


Ø	EA	EB	EC	ED	EE	EG*	AM	KK	COD.	Ø
50	80 <sup>+0</sup> <sub>-0.4</sub>	22	18 <sup>FB</sup>	72	30	35	35	M.20X2,5	B30.AE.05	50
63	90 <sup>+0</sup> <sub>-0.4</sub>	30	22 <sup>FB</sup>	82	30	45	45	M.24X3	B30.AE.06	63
80	110 <sup>+0</sup> <sub>-0.4</sub>	35	25 <sup>FB</sup>	106	35	45	45	M.27X3	B30.AE.08	80
100	140 <sup>+0</sup> <sub>-0.4</sub>	40	30 <sup>FB</sup>	130	40	50	50	M.36X4	B30.AE.10	100
125	164 <sup>+0</sup> <sub>-0.5</sub>	50	35 <sup>FB</sup>	152	45	55	55	M.42X4,5	B30.AE.12	125
160	194 <sup>+0</sup> <sub>-0.5</sub>	50	40 <sup>FB</sup>	186	55	75	75	M.52X3	B30.AE.16	160
200	250 <sup>+0</sup> <sub>-0.5</sub>	55	45 <sup>FB</sup>	242	55	75	75	M.52X3	B30.AE.20	200
250	325 <sup>+0</sup> <sub>-1.2</sub>	70	50 <sup>FB</sup>	305	65	100	100	M.68X4	B30.AE.25	250
300	375 <sup>+0</sup> <sub>-1.2</sub>	75	60 <sup>FB</sup>	360	75	100	100	M.68X4	B30.AE.30	300

\* La posición del zuncho en el cilindro, representada por la cota EG, será indicada a la realización del pedido.

\* The position of the intermediate hinge, represented by the dimension figure EG, will be given when placing the order.

### Sorporte Zuncho Intermediate Hinge Bearing



Ø	FA	FB	FC	FD	FE	FF	FG*	FI	FJ	AM	KK	COD.	Ø
50	65	50	9	80 <sup>+0</sup> <sub>-0.4</sub>	22	102	40	10	35	35	M.20X2,5	G30.AF.05	50
63	75	58	11	90 <sup>+0</sup> <sub>-0.4</sub>	30	120	50	10	45	45	M.24X3	G30.AF.06	63
80	85	66	11	110 <sup>+0</sup> <sub>-0.4</sub>	35	145	60	12	45	45	M.27X3	G30.AF.08	80
100	100	78	13	140 <sup>+0</sup> <sub>-0.4</sub>	40	180	75	16	50	50	M.36X4	G30.AF.10	100
125	115	90	15	164 <sup>+0</sup> <sub>-0.5</sub>	50	214	84	18	55	55	M.42X4,5	G30.AF.12	125
160	135	105	17	194 <sup>+0</sup> <sub>-0.5</sub>	50	244	100	20	75	75	M.52X3	G30.AF.16	160
200	160	120	21	250 <sup>+0</sup> <sub>-0.5</sub>	55	305	125	25	75	75	M.52X3	G30.AF.20	200
250	175	130	25	325 <sup>+0</sup> <sub>-1.2</sub>	70	395	150	30	100	100	M.68X4	G30.AF.25	250
300	200	155	28	375 <sup>+0</sup> <sub>-1.2</sub>	75	450	180	35	100	100	M.68X4	G30.AF.30	300

\* La posición del soporte en el cilindro, representada por la cota FG, será indicada a la realización del pedido.

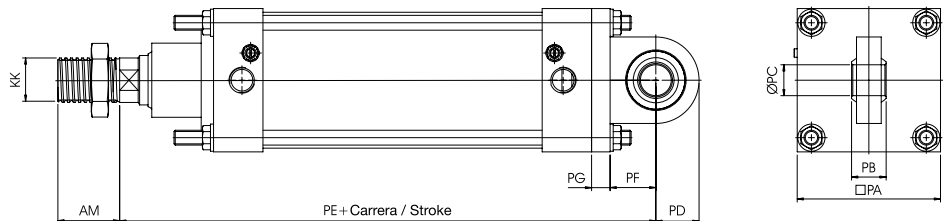
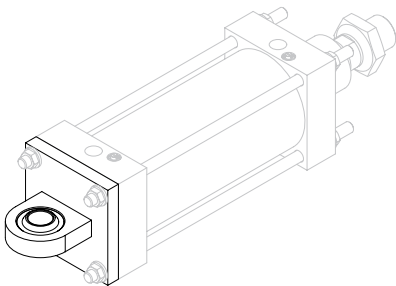
\* The position of the bearing, represented by the dimension figure FG, will be given when placing the order.

## Serie 30 y 35 / 30 and 35 Series

### Cilindros Extra Fuertes / Heavy Duty cylinders

### Accesorios de fijación / Fixing elements

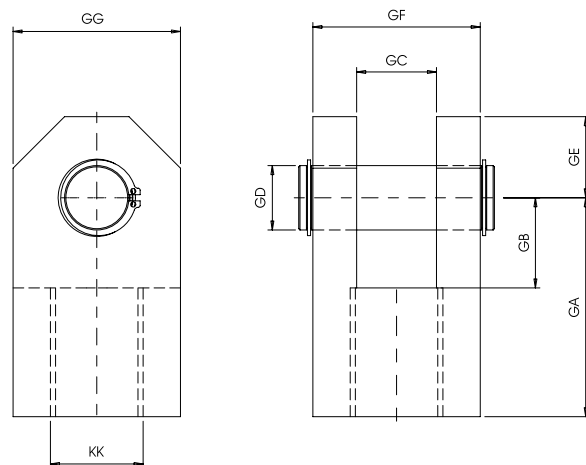
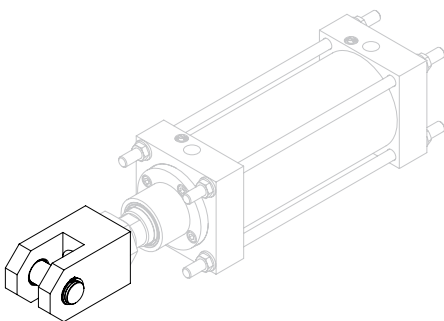
#### Articulación Trasera con Rótula Rear Hinge with Ball Joint



Ø	PA	PB	PC	PD	PE	PF	PG	AM	KK
50	70	16	15	20	212	25	8	35	M.20X2,5
63	80	20	17	24	220	25	8	45	M.24X3
80	95	25	20	28	237	28	10	45	M.27X3
100	116	28	25	35	284	37	15	50	M.36X4
125	145	28	25	35	308	50	15	55	M.42X4,5
160	182	32	30	40	336	54	18	75	M.52X3
200	225	35	35	45	405	63	22	75	M.52X3
250	275	40	40	50	459	72	28	100	M.68X4
300	325	56	50	65	469	82	28	100	M.68X4

COD.	Ø
G30.AP.05	50
G30.AP.06	63
G30.AP.08	80
G30.AP.10	100
G30.AP.12	125
G30.AP.16	160
G30.AP.20	200
G30.AP.25	250
G30.AP.30	300

#### Horquilla con Bulón Yoke with Pivot

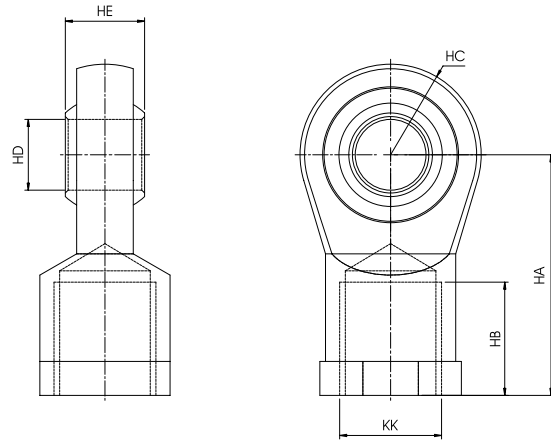
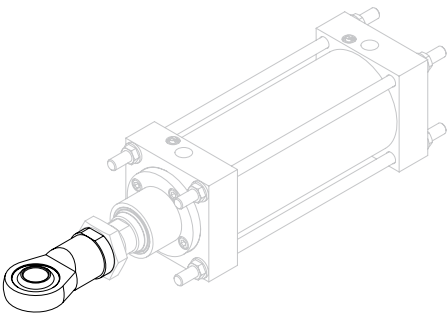


Ø	GA	GB	GC	GD H9	GE	GF	GG	KK
50	55	20	16	15	19	35	35	M.20X2,5
63	67	22	18	16	20	40	40	M.24X3
80	70	25	20	20	25	50	50	M.27X3
100	85	35	31	25	31,5	65	65	M.36X4
125	90	40	33	25	36,5	75	75	M.42X4,5
160	105	45	34	30	39	80	80	M.52X3
200	110	50	34	35	41	80	80	M.52X3
250	135	47	42	40	48	100	100	M.68X4
300	145	57	46	50	53	110	110	M.68X4

COD.	Ø
G30.AG.05	50
G30.AG.06	63
G30.AG.08	80
G30.AG.10	100
G30.AG.12	125
G30.AG.16	160
G30.AG.20	200
G30.AG.25	250
G30.AG.30	300

**Serie 30 y 35 / 30 and 35 Series**  
**Cilindros Extra Fuertes / Heavy Duty cylinders**  
**Accesorios de fijación / Fixing elements**

**Rótula**  
*Ball Joint*



Ø	HA	HB	HC	HD	H9	HE	KK
50	55	28	20	15	16	M.20X2,5	
63	67	36	24	17	20	M.24X3	
80	70	36	28	20	25	M.27X3	
100	85	40	32	25	28	M.36X4	
125	90	45	35	25	28	M.42X4,5	
160	105	56	40	30	32	M.52X3	
200	110	56	43	35	35	M.52X3	
250	135	72	53	40	40	M.68X4	
300	145	72	59	50	56	M.68X4	

COD.	Ø
G30.AH.05	50
G30.AH.06	63
G30.AH.08	80
G30.AH.10	100
G30.AH.12	125
G30.AH.16	160
G30.AH.20	200
G30.AH.25	250
G30.AH.30	300